

New Forms | New Decorations | Infinite Possibilities

2021



tervis®

The Original Insulated Drinkware

ASI #90914

PPAI #110960

Sage #50153

UPIC - TERVIS

We're passionate about our oceans and care about the creatures who call it home.
We're committed to making it a better place and have been since 1946.
Not because it's trendy or helps sell tumblers, **but because it's the right thing to do.**

50 Billion

Americans dispose of about 50 billion single-use plastic water bottles each year.

Only 23% Recycled

The annual U.S. recycling rate for plastic is only 23%, leaving 38 billion single-use water bottles to enter our landfills.

11,000 Pieces

People who regularly eat seafood ingest up to 11,000 tiny pieces of plastic every year.



1.1 Million

Plastic waste, including plastic bottles, washes into the ocean killing 1.1 million marine creatures annually.

500 Billion

About 500 billion disposable cups are thrown away in the U.S. each year.

Pound for Pound

by 2050 the ocean will contain more plastic, pound for pound, than fish.

We've been making high quality reusable plastic drinkware that lasts longer. Our colorful and expressive designs also make it something that people want to hold on to for a lifetime. We also offer an industry leading guarantee that ensures any product deemed defective and returned to us is replaced with a new one to encourage continued sustainable practices. The returned drinkware is not just recycled, but upcycled into new, usable materials to prevent any contribution to the waste stream.

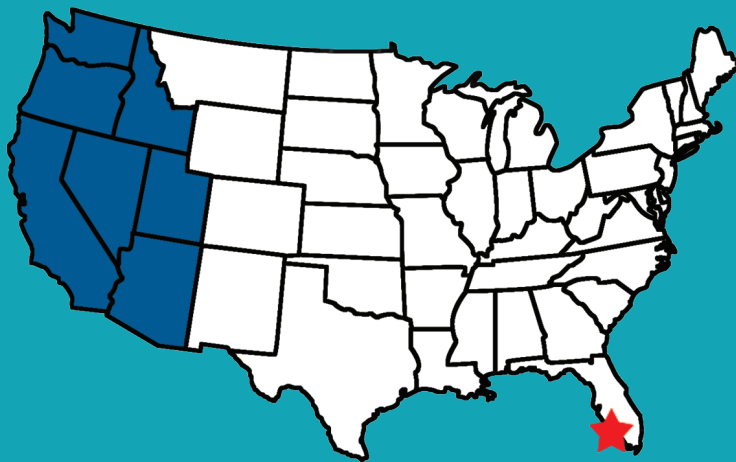


introduces

Freight Equalization

FedEx 3-day Air at Ground Cost

Orders shipping to:



Arizona
California
Idaho
Nevada
Oregon
Utah
Washington

Terms and Conditions:

1,000 Tumbler Limit

No LTL Shipments

Shipper Accounts Not Accepted



24oz, 32oz and 40oz Wide Mouth Bottles

Our new Wide Mouth Bottles offer all the benefits of stainless steel and can be enjoyed with legendary custom decoration, all with a leak proof lid.

- ▶ Double-walled vacuum insulation
- ▶ Premium grade copper lined 18/8 stainless steel
- ▶ Limited 5-year guarantee
- ▶ Recommended for cold beverages only
- ▶ 24oz up to 60-hours cold, 32oz up to 72-hours cold, 40oz up to 84-hours
- ▶ Do not put bottles in dishwasher, freezer or microwave

Country of origin for stainless tumbler – China

Country of origin for lid and decoration – USA

Customization Options (see pages 22-23 for details)

- ▶ **UV Print:** 4-Color process using UV ink allows for high resolution, photo quality images and logos.

Imprint Area:

24oz Wide Mouth Bottle: 9.5" x 8.3" (full wrap), 3.5" max front and center

32oz Wide Mouth Bottle: 11.4" x 7.5" (full wrap), 3.25" max front and center

40oz Wide Mouth Bottle: 11.4" x 9.35" (full wrap), 3.75" max front and center

Production Time: 10 business days after proof approval.

- ▶ **Laser Etching:** Laser Etching available on our powder coated bottles.

Imprint Area max front and center:

24oz Wide Mouth Bottle: 2.75" x 3.875"

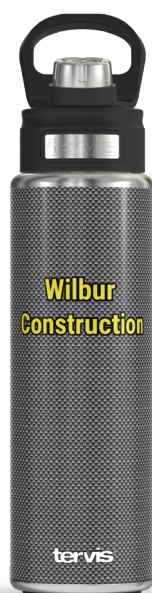
32oz Wide Mouth Bottle: 2.75" x 3.875"

40oz Wide Mouth Bottle: 2.75" x 3.875"

Production Time:

10-business days after proof approval.





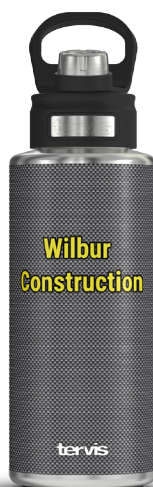
24oz Wide Mouth Bottle

Price includes: 360° decoration method using 4-color process with UV ink or laser engraving and a screw-on spill-proof lid.

qty	25-299	300-999	1000-2999	3000+
price	\$25.83	\$25.00	\$24.17	call

3c

Setup: \$83.33 (c)
 Spec Sample: \$83.33 (c)
 Exact Reorder Setup: \$33.33 (c)
 Variable print Fee: \$0.83 (c) per bottle



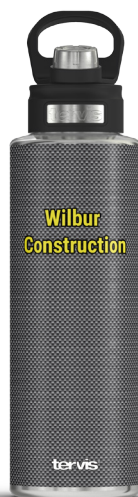
32oz Wide Mouth Bottle

Price includes: 360° decoration method using 4-color process with UV ink or laser engraving and a screw-on spill-proof lid.

qty	25-299	300-999	1000-2999	3000+
price	\$30.00	\$29.17	\$28.33	call

3c

Setup: \$83.33 (c)
 Spec Sample: \$83.33 (c)
 Exact Reorder Setup: \$33.33 (c)
 Variable print Fee: \$0.83 (c) per bottle



40oz Wide Mouth Bottle

Price includes: 360° decoration method using 4-color process with UV ink or laser engraving and a screw-on spill-proof lid.

qty	25-299	300-999	1000-2999	3000+
price	\$34.17	\$33.33	\$32.50	call

3c

Setup: \$83.33 (c)
 Spec Sample: \$83.33 (c)
 Exact Reorder Setup: \$33.33 (c)
 Variable print Fee: \$0.83 (c) per bottle

20oz and 30oz Stainless Steel

The double-walled tumbler offers all the benefits of stainless steel and can be enjoyed with legendary custom decoration. Lids included.

- Double-walled vacuum insulation
- Premium grade copper lined 18/8 stainless steel
- Limited 5-year guarantee
- Up to 24-hours cold and 8-hours hot
- Do not put tumbler in dishwasher, freezer or microwave

Country of origin for stainless tumbler – China

Country of origin for lid and decoration – USA

Customization Options (see page 20 for details)

UV Print: 4-Color process using UV ink allows for high resolution, photo quality images and logos.

Imprint Area:

20oz Stainless Steel: 9.9" x 6.2" (full wrap), 3.25" max front and center

30oz Stainless Steel: 11.3" x 7.5" (full wrap), 3.75" max front and center

Production Time: 10 business days after proof approval.

Laser Etching: Laser Etching available on our powder coated tumblers.

Imprint Area max front and center:

20oz Stainless Steel: 2.75" x 3.875"

30oz Stainless Steel: 2.75" x 3.875"

Production Time:

10-business days after proof approval.





20oz Stainless Steel

Price includes: 360° decoration method using 4-color process with UV ink or laser engraving and snap tight spill resistant lid made from TRITAN™ material.

qty	25-299	300-999	1000-2999	3000+
price	\$21.67	\$20.83	\$20.00	call

3c

Setup: \$83.33 (c)

Spec Sample: \$83.33 (c)

Exact Reorder Setup: \$33.33 (c)

Variable print Fee: \$0.83 (c) per bottle

Packaging: Call for gift box options.



30oz Stainless Steel

Price includes: 360° decoration method using 4-color process with UV ink or laser engraving and snap tight spill resistant lid made from TRITAN™ material.

qty	25-299	300-999	1000-2999	3000+
price	\$28.33	\$27.50	\$26.67	call

3c

Setup: \$83.33 (c)

Spec Sample: \$83.33 (c)

Exact Reorder Setup: \$33.33 (c)

Variable print Fee: \$0.83 (c) per bottle

Packaging

Drawstring Microfiber Gift Bag

\$2.50 each



12oz and 25oz Stainless Steel

Our 12oz tumbler and 25oz Carafe offer all the benefits of stainless steel and can be enjoyed with our durable, BPA free powder coating or direct all over print. Our 25oz stainless slim carafe includes a leak proof, insulated lid and quiet non-slip base. Pair this with the 12oz wine glass for the ultimate gifting set!

- ▶ Premium grade copper lined 18/8 stainless steel
- ▶ Limited 5-year guarantee
- ▶ 25oz recommended cold beverages only, keeps cold up to 60-hours
- ▶ 12oz tumbler keeps your drink hot for up to 6-hours or cold for up to 15-hours (use caution with hot liquids)
- ▶ Do not put in dishwasher, freezer or microwave

Country of origin for stainless tumbler – China

Country of origin for lid and decoration – USA

Customization Options (see pages 22-23 for details)

- ▶ **UV Print:** 4-Color process using UV ink allows for high resolution, photo quality images and logos.

Imprint Area:

12oz Stainless Steel: 12.2" x 3" (full wrap), 3.5" max front and center

25oz Stainless Steel: 9.9" x 6.2" (full wrap), 3.25" max front and center

Production Time: 10 business days after proof approval.

- ▶ **Laser Etching:** Laser Etching available on our powder coated tumblers.

Imprint Area max front and center:

12oz Stainless Steel: 2.75" x 3.875"

25oz SLIM Stainless Steel: 2.25" x 6"

Production Time:

10-business days after proof approval.





12oz Stainless Steel

Price includes: 360° decoration method using 4-color process with UV ink or laser engraving and snap tight spill resistant lid made from TRITAN™ material.

qty	25-299	300-999	1000-2999	3000+
price	\$20.00	\$19.17	\$18.33	call

3c

Setup: \$83.33 (c)

Spec Sample: \$83.33 (c)

Exact Reorder Setup: \$33.33 (c)

Variable print Fee: \$0.83 (c) per bottle

Packaging: Call for gift box options.



25oz Slim Stainless Steel

Price includes: 360° decoration method using 4-color process with UV ink or laser engraving and a screw on spill resistant lid.

qty	25-299	300-999	1000-2999	3000+
price	\$20.83	\$20.83	\$20.83	call

3c

Setup: \$83.33 (c)

Spec Sample: \$83.33 (c)

Exact Reorder Setup: \$33.33 (c)

Variable print Fee: \$0.83 (c) per bottle

Packaging: Call for gift box options.

17oz Slim Stainless Steel and 24oz Water Bottle Stainless Steel

The double-walled bottles offer all the benefits of stainless steel and can be enjoyed with legendary custom decorations. Lids included.

- ▶ Double-walled vacuum insulation
- ▶ Premium grade copper lined 18/8 stainless steel
- ▶ Limited 5-year guarantee
- ▶ Recommended for cold beverages only
- ▶ 17oz up to 48-hours cold, 24oz up to 24-hours cold
- ▶ Do not put in dishwasher, freezer or microwave

Country of origin for stainless tumbler – China

Country of origin for lid and decoration – USA

Customization Options (see pages 22-23 for details)

- ▶ **UV Print:** 4-Color process using UV ink allows for high resolution, photo quality images and logos.

Imprint Area:

17oz Slim Stainless Steel Water Bottle:

8.4" x 7.7" (full wrap),

3" max front and center

24oz Stainless Steel Water Bottle:

9.7" x 7.6" (full wrap),

3.5" max front and center

Production Time:

10-business days after proof approval.





17oz Slim Stainless Steel

Price includes: 360° decoration method using 4-color process with UV ink and a screw on spill resistant lid.

qty	25-299	300-999	1000-2999	3000+
price	\$16.67	\$16.67	\$16.67	call

3c

Setup: \$83.33 (c)
 Spec Sample: \$83.33 (c)
 Exact Reorder Setup: \$33.33 (c)
 Variable Print Fee: \$0.83 (c) per bottle



24oz Stainless Steel Water Bottle

Price includes: 360° decoration method using 4-color process with UV ink and snap-tight spill-resistant lid made from TRITAN™ material.

qty	25-299	300-999	1000-2999	3000+
price	\$25.83	\$25.00	\$24.17	call

3c

Setup: \$83.33 (c)
 Spec Sample: \$83.33 (c)
 Exact Reorder Setup: \$33.33 (c)
 Variable Print Fee: \$0.83 (c) per bottle

Packaging

- ▶ Drawstring Microfiber Gift Bag
\$2.50 each



16oz Classic Tumbler

The original 16oz double-walled insulated tumbler includes snap on travel lid with slide closure.

- ▶ Manufactured from clear TRITAN™ for clarity, impact strength and durability.
- ▶ Great for both hot and cold
- ▶ Made in America & Lifetime Guarantee
- ▶ Microwave and Dishwasher Safe
- ▶ Reduces Condensation
- ▶ BPA free, Prop 65, CPSIA, NSF/ANSI Standard 51 and 61 compliant



Customization Options (see pages 22-23 for details)

- ▶ **Wraps:** Digitally printed on durable acetate film allows for high resolution, full-color photo quality images and logos. Variable print data can be included on each tumbler for an additional fee.
Imprint Area: 10.2" x 6.2" (full wrap), 3.25" max front and center
Production Time: 5-business days after proof approval.
- ▶ **Embroidery:** Classic stitched patch up to 10 thread colors.
Imprint Area: 2.5" overall or 3" wide
Production time: 10-business days after proof approval.
- ▶ **Enhanced Embroidery:** Woven fabric patch with dye sublimated print.
Imprint Area: 2.5" overall or 3" wide
Production Time: 10-business days after proof approval.

Lid Options

Travel Lid



Straw Lid



Packaging



▶ Individual Box



▶ Drawstring Microfiber
Gift Bag
\$2.50 each



▶ 2-Pack Box



▶ 4-Pack Box

16oz Classic Tervis®

Price includes: Your choice of customization option of wrap-around, embroidered emblem or enhanced emblem with choice of travel lid with slide closure.

qty	50-299	300-999	1000-2999	3000+
price	\$15.00	\$13.33	\$11.67	call

Deduct 1.67 (c) per unit if lids are not required.

3c

Setup: \$83.33 (c)

Variable Print Fee: \$0.83 (c) per wrap

Spec Sample: \$83.33 (c)

Exact Reorder Setup: \$33.33 (c)

Second Emblem Application per unit: \$2.50 (c)

Available Accessories (see pages 24-26 for details)

Shaker Top: \$6.33 (c) Available in: Black

Handle: \$4.75 (c)

- Black
- Blue
- Brown
- Red
- Royal Purple
- Fuchsia
- Lime Green
- Neon Yellow
- Turquoise

Straws: \$1.67 (c) Bulk 25-pack: \$6.25 (c)

- 6-pack clear or assorted colors.
- Bulk all colors.
- Straws available in 10".

Jewel Tone: \$1.67 (c)

- Black
- Blue
- Green
- Orange
- Purple
- Red

Travel Lid:

- Brown
- Black
- Blue
- Blue Moon
- Citrus Sunrise
- Clear
- Elderberry Wild
- Fuchsia
- Hunter Green
- Lime Green
- Mangrove Green
- Maroon
- Navy
- Neon Pink
- Neon Yellow
- Orange
- Pink
- Red
- Royal Purple
- Turquoise
- White
- Yellow

Straw Lid: \$1.67 (c)

Available in: Black, Brown, Royal Purple, Royal Blue, Hunter Green, Lime Green, Red, Passion Pink, Turquoise

Packaging Options:

qty	50-299	300-999	1000-2999	3000+
Single Box	\$15.83	\$14.17	\$12.50	call
	25-149	150-499	500-1499	1500+
2-Pack	\$30.83	\$27.50	\$24.17	call
	13-74	75-249	250-749	750+
4-pack	\$60.83	\$54.17	\$47.50	call

Deduct \$1.67 (c) per unit if lids are not required.

3c

24oz Classic Tumbler

The original 24oz double-walled insulated tumbler includes snap-on travel lid with slide closure.

- ▶ Manufactured from clear TRITAN™ for clarity, impact strength and durability.
- ▶ Great for both hot and cold
- ▶ Made in America & Lifetime Guarantee
- ▶ Microwave and Dishwasher Safe
- ▶ Reduces Condensation
- ▶ BPA free, Prop 65, CPSIA, NSF/ANSI Standard 51 and 61 compliant



Customization Options (see pages 22-23 for details)

- ▶ **Wraps:** Digitally printed on durable acetate film allows for high resolution, full-color photo quality images and logos. Variable print data can be included on each tumbler for an additional fee.
Imprint Area: 11.9" x 8" (full wrap), 3.5" max front and center
Production Time: 5-business days after proof approval.
- ▶ **Embroidery:** Classic stitched patch up to 10 thread colors.
Imprint Area: 2.5" overall or 3" wide
Production time: 10-business days after proof approval.
- ▶ **Enhanced Embroidery:** Woven fabric patch with dye sublimated print.
Imprint Area: 2.5" overall or 3" wide
Production Time: 10-business days after proof approval.

Lid Options

Travel Lid



Straw Lid



Packaging

- ▶ **Drawstring Microfiber Gift Bag**
\$2.50 each



- ▶ **Individual Box**



- ▶ **2-Pack Box**



24oz Classic Tervis®

Price includes: Your choice of customization option of wrap-around, embroidered emblem or enhanced emblem with choice of travel lid with slide closure.

qty	50-299	300-999	1000-2999	3000+
price	\$17.50	\$15.83	\$14.17	call

Deduct \$1.67 (c) per unit if lids are not required.

3c

Setup: \$83.33 (c)

Variable Print Fee: \$0.83 (c) per wrap

Spec Sample: \$83.33 (c)

Exact Reorder Setup: \$33.33 (c)

Second Emblem Application per unit: \$2.50 (c)

Available Accessories (see pages 24-26 for details)

Shaker Top: \$6.33 (c) Available in: Black

Handle: \$4.75 (c)

- Black
- Blue
- Brown
- Red
- Royal Purple
- Fuchsia
- Lime Green
- Neon Yellow
- Turquoise

Straws: \$1.67 (c) Bulk 25-pack: \$6.25 (c)

- 6-pack clear or assorted colors.
- Bulk all colors.
- Straws available in 10".

Jewel Tone: \$1.67 (c)

- Black
- Blue
- Green
- Orange
- Purple
- Red

Travel Lid:

- Brown
- Black
- Blue
- Blue Moon
- Citrus Sunrise
- Clear
- Elderberry Wild
- Fuchsia
- Hunter Green
- Lime Green
- Mangrove Green
- Maroon
- Navy
- Neon Pink
- Neon Yellow
- Orange
- Pink
- Red
- Royal Purple
- Turquoise
- White
- Yellow

Straw Lid: \$1.67 (c)

Available in: Black, Brown, Royal Purple, Royal Blue, Hunter Green, Lime Green, Red, Passion Pink, Turquoise

Packaging Options:

qty	50-299	300-999	1000-2999	3000+
Single Box	\$18.33	\$16.67	\$15.00	call
	25-149	150-499	500-1499	1500+
2-Pack	\$35.83	\$32.50	\$29.17	call
	13-74	75-249	250-749	750+
4-pack	\$60.83	\$54.17	\$47.50	call

Deduct \$1.67 (c) per unit if lids are not required.

3c

24oz Water Bottle

Our double-walled insulated sport bottle features our flip-top spill proof lid.

- ▶ Manufactured from clear TRITAN™ for clarity, impact strength and durability.
- ▶ Great for cold
- ▶ Hot liquids and carbonated beverages are not recommended for use in water bottle
- ▶ Made in America & Lifetime Guarantee
- ▶ Microwave and Dishwasher Safe
- ▶ Reduces Condensation
- ▶ BPA free, Prop 65, CPSIA, NSF/ANSI Standard 51 and 61 compliant



Customization Options (see pages 22-23 for details)

- ▶ **Wraps:** Digitally printed on durable acetate film allows for high resolution, full-color photo quality images and logos. Variable print data can be included on each tumbler for an additional fee.
Imprint Area: 9.9" x 7.9" (full wrap), 3" max front and center
Production Time: 5-business days after proof approval.
- ▶ **Embroidery:** Classic stitched patch up to 10 thread colors.
Imprint Area: 2.5" overall or 3" wide
Production time: 10-business days after proof approval.
- ▶ **Enhanced Embroidery:** Woven fabric patch with dye sublimated print.
Imprint Area: 2.5" overall, 3" max wide width, 2.75" max height
Production Time: 10-business days after proof approval.

Lid Options



Packaging

- ▶ **Drawstring Microfiber Gift Bag**
\$2.50 each



24oz Water Bottle

Price includes: Your choice of customization option of wrap-around, embroidered emblem or enhanced emblem with choice of snap-tight spill-resistant lid made from TRITAN™ material.

qty	50-299	300-999	1000-2999	3000+
price	\$21.67	\$20.00	\$18.33	call

3c

Setup: \$83.33 (c)

Variable Print Fee: \$0.83 (c) per wrap

Spec Sample: \$83.33 (c)

Exact Reorder Setup: \$33.33 (c)

Second Emblem Application per unit: \$2.50 (c)

Available Accessories (see pages 24-26 for details)

Straws: \$1.67 (c) **Bulk 25-pack:** \$6.25 (c)

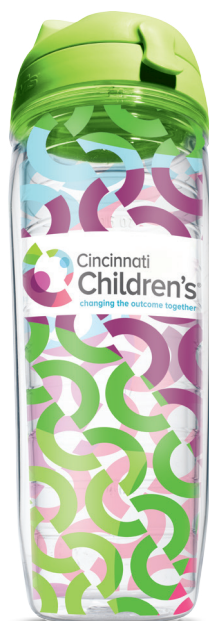
Available in:

- 6-pack clear or assorted colors.
- Bulk all colors.
- Straws available in 10".

Lids:

- Black with Gray
- Hunter Green
- Lime Green
- Maroon
- Navy Blue
- Orange
- Fuchsia
- Red
- Royal Blue
- Royal Purple
- Turquoise
- Yellow

3c



16oz Classic Mug

The original double-walled insulated Mug (16oz) with handle includes snap on travel lid with slide closure

- ▶ Manufactured from clear TRITAN™ for clarity, impact strength and durability.
- ▶ Great for both hot and cold
- ▶ Made in America & Lifetime Guarantee
- ▶ Microwave and Dishwasher Safe
- ▶ Reduces Condensation
- ▶ BPA free, Prop 65, CPSIA, NSF/ANSI Standard 51 and 61 compliant



Customization Options (see pages 22-23 for details)

- ▶ **Wraps:** Digitally printed on durable acetate film allows for high resolution, full-color photo quality images and logos. Variable print data can be included on each tumbler for an additional fee.
Imprint Area: 12.1" x 4.5" (full wrap), 3.5" max front and center
Production Time: 5-business days after proof approval.
- ▶ **Embroidery:** Classic stitched patch up to 10 thread colors.
Imprint Area: 2.5" overall or 3" wide
Production time: 10-business days after proof approval.
- ▶ **Enhanced Embroidery:** Woven fabric patch with dye sublimated print.
Imprint Area: 2.5" overall or 3" wide
Production Time: 10-business days after proof approval.

Lid Options

Travel Lid



Straw Lid



Packaging

▶ Individual Box



▶ Drawstring Microfiber Gift Bag \$2.50 each



16oz Classic Mug

Price includes: Your choice of customization option of wrap-around, embroidered emblem or enhanced emblem with choice of travel lid with slide closure.

qty	50-299	300-999	1000-2999	3000+
price	\$13.33	\$11.67	\$10.00	call

Deduct 1.67 (c) per unit if lids are not required.

3c

Setup: \$83.33 (c)

Variable Print Fee: \$0.83 (c) per wrap

Spec Sample: \$83.33 (c)

Exact Reorder Setup: \$33.33 (c)

Second Emblem Application per unit: \$2.50 (c)

Available Accessories (see pages 24-26 for details)

Straws: \$1.67 (c) Bulk 25-pack: \$6.25 (c)

- 6-pack clear or assorted colors.
- Bulk all colors.
- Straws available in 10".

Jewel Tone: \$1.67 (c)

- Black
- Blue
- Green
- Orange
- Purple
- Red

Travel Lid:

- Brown
- Black
- Blue
- Blue Moon
- Citrus Sunrise
- Clear
- Elderberry Wild
- Fuchsia
- Hunter Green
- Lime Green
- Mangrove Green
- Maroon
- Navy
- Neon Pink
- Neon Yellow
- Orange
- Pink
- Red
- Royal Purple
- Turquoise
- White
- Yellow

Straw Lid: \$1.67 (c)

Available in: Black, Brown, Royal Purple, Royal Blue, Hunter Green, Lime Green, Red, Passion Pink, Turquoise

Packaging Options:

qty	50-299	300-999	1000-2999	3000+
Single Box	\$14.17	\$12.50	\$10.83	call

Deduct \$1.67 (c) per unit if lids are not required.

3c

10oz Classic Wavy Tumbler

The original 10oz wavy double-walled insulated tumbler includes snap on travel lid with slide closure.

- ▶ Manufactured from clear TRITAN™ for clarity, impact strength and durability.
- ▶ Great for both hot and cold
- ▶ Made in America & Lifetime Guarantee
- ▶ Microwave and Dishwasher Safe
- ▶ Reduces Condensation
- ▶ BPA free, Prop 65, CPSIA, NSF/ANSI Standard 51 and 61 compliant



Customization Options (see pages 22-23 for details)

- ▶ **Wraps:** Digitally printed on durable acetate film allows for high resolution, full-color photo quality images and logos. Variable print data can be included on each tumbler for an additional fee.
Imprint Area: 9.2" x 5.5" (full wrap), 2" max front and center
Production Time: 5-business days after proof approval.
- ▶ **Embroidery:** Classic stitched patch up to 10 thread colors.
Imprint Area: 2.5" overall or 3" wide
Production time: 10-business days after proof approval.
- ▶ **Enhanced Embroidery:** Woven fabric patch with dye sublimated print.
Imprint Area: 2.5" overall or 3" wide
Production Time: 10-business days after proof approval.

Lid Options

Travel Lid



Straw Lid



Packaging

- ▶ Drawstring Microfiber Gift Bag
\$2.50 each



10oz Classic Wavy Tervis®

Price includes: Your choice of customization option of wrap-around, embroidered emblem or enhanced emblem with choice of travel lid with slide closure.

qty	50-299	300-999	1000-2999	3000+
price	\$13.33	\$11.67	\$10.00	call

Deduct \$1.67 (c) per unit if lids are not required.

3c

Setup: \$83.33 (c)

Variable Print Fee: \$0.83 (c) per wrap

Spec Sample: \$83.33 (c)

Exact Reorder Setup: \$33.33 (c)

Second Emblem Application per unit: \$2.50 (c)

Available Accessories (see pages 24-26 for details)

Straws: \$1.67 (c) **Bulk 25-pack:** \$6.25 (c)

- 6-pack clear or assorted colors.
- Bulk all colors.
- Straws available in 10".

Travel Lid:

- Black
- Fuchsia
- Maroon
- Neon Yellow
- Red
- Yellow
- Blue
- Hunter Green
- Navy
- Orange
- Royal Purple
- Clear
- Lime Green
- Neon Pink
- Pink
- Turquoise

Straw Lid: \$1.67 (c)

- Black
- Royal Blue
- Red
- Brown
- Hunter Green
- Passion Pink
- Royal Purple
- Lime Green
- Turquoise

Customization Options

Our unique customization options can give your design the desired impact in a variety of ways. Once it's sealed between the insulated walls of our tumblers, mugs and water bottles, it will be there for a lifetime of enjoyment.

Embroidery

Choose the embroidery patch to showcase your company logo. The art of decorating fabric with needle and thread will give your logo or design a unique and high-end look. At Tervis classic embroidery is always richly detailed, bright and fun.

Dimensions: 2.5" W

Color Options: Up to 10 thread colors

Production Time: 10-business days after proof approval



Enhanced Embroidery

Perfect for artwork with small copy and fine detail that cannot be reproduced with traditional embroidery. Our method of dye sublimation provides greater detail and color by printing directly on a woven fabric patch.

Dimensions: 2.5" W

Color Options: 1-4 spot colors OR 4-color process

Production Time: 10-business days after proof approval



Laser Etching

Laser Etching available on powder coated tumblers. Our Stainless Steel tumblers are not safe for use in Microwave ovens.

Dimensions: 2.75" x 3.875"

Color Options: Black, Navy, White, Cassis, Cantaloupe,
Mellow Yellow, Neo Mint, Purist Blue

Production Time: 10-business days after proof approval.



Wrap

Wrap inserts can really bring your message to light by rounding out the entire design and giving it the impact it deserves.

Digitally printed on durable acetate film that allows for high resolution, full-color photo quality images and logos

Dimensions: 360° (round)

Color Options: 1-4 spot colors OR 4-color process

Production Time: 5-business days after proof approval



Art Guidelines

Recommended Files

All type must be outlined or fonts need to be submitted with art. Art has to be embedded and should never be linked. Placed jpg files will not be processed.

- Adobe Illustrator Artwork (AI)
- Portable Document Format (PDF)
- Encapsulated Postscript Vector graphics (EPS)

Acceptable File Formats

Minimum image requirements for files submitted have to be 5" x 5" with at least 300 DPI.

- Photoshop Document (PSD)
- Tagged Image Format File (TIF)
- Joint Photographic Experts Group (JPEG)
- Portable Network Graphics (PNG)

Accessories

Travel Lids

Our lids aren't merely lids. They're secure-fitting, colorful and reusable spill minimizers that allow maximum enjoyment by ensuring every last drop will not be lost or wasted. Lids fit 10oz Wavy, 16oz Classic Tumbler, 24oz Classic Tumbler and Classic Mug.



Black
PMS Process
Black



Blue
PMS 653



Blue Moon
PMS 635



Brown
PMS 7554



Clear
PMS n/a



Citrus
Sunrise
PMS 163



Elderberry
Wild
PMS 2447



Fuchsia
PMS 205



Hunter
Green
PMS 3302



Lime Green
PMS 375



Mangrove
Green
PMS 2247



Maroon
PMS 209



Navy Blue
PMS 295



Neon Pink
PMS 806



Neon Yellow
PMS 809



Orange
PMS 1645



Pink
PMS 182



Red
PMS 187



Royal Purple
PMS 2617



Turquoise
PMS 639



Yellow
PMS 123



White
PMS n/a

Straw Lids

Lids fit 10oz Wavy, 16oz Classic Tumbler, 24oz Classic Tumbler and Classic Mug.



Black
PMS Process
Black



Blue
PMS 286



Brown
PMS Pantone
Black 5



Hunter
Green
PMS 3302



Lime Green
PMS 375



Passion Pink
PMS 7424



Red
PMS 200



Royal Purple
PMS 2607



Turquoise
PMS 639

Water Bottle Lids



Black
PMS Process
Black



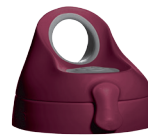
Gray
PMS 427



Hunter
Green
PMS 3302



Lime Green
PMS 375



Maroon
PMS 209



Navy Blue
PMS 295



Orange
PMS 172



Passion Pink
PMS 7424



Red
PMS 200



Royal Blue
PMS 286



Royal Purple
PMS 2617



Turquoise
PMS 639



Yellow
PMS 122

Handles (handle may obstruct custom design)

These convenient handles slip on easily, ensuring smooth operation and a comfy fit in cup holders. Available for 16oz Classic Tumbler and 24oz Classic Tumbler. Choose from 10 color options.



Black
PMS Process
Black



Blue
PMS 653



Brown
PMS Pantone
Black 5



Fuchsia
PMS 205



Lime Green
PMS 375



Neon Yellow
PMS 809



Neon
Orange
PMS 804



Red
PMS 187



Royal Purple
PMS 268



Turquoise
PMS 639



Shaker Top

Available for 16 oz Classic Tumbler and 24 oz Classic Tumbler. Cocktail hour will never be the same! Great for protein shakes too! Includes: 1 oz jigger, strainer & pourer. Dishwasher safe - top rack only. Shipped in poly-bag.



Straws

Available in clear 6-pack or assorted colors 6-pack. Available in bulk of 25 for each color. Straight straws available in 10".

Jewel Collection

Our rich jewel tones are another brilliant option to showcase your brand. Set off the colors in your custom logo by putting it in a brightly colored tumbler.



Blue Moon



Citrus Sunrise



Elderberry Wild



Mangrove Green



Quartz



Red

Terms & Conditions

Placing An Order

Placing an order with Tervis confirms acceptance of these corporate terms and conditions. Orders must be faxed to 888-508-8861 or emailed to custom@tervis.com. Order confirmation will be emailed to you once the order has been processed. Please check your order confirmation immediately.

The following must be included with your PO to be considered a production ready order:

- Acceptable art files (see page 23)
- Ship to address, Bill to address and contact information
- Shipping instructions
- Item description
- Quantity
- Price
- Special instructions
- Method of payment
- State issued sales tax exemption certificate (if applicable)
- Up to date artwork agreement

If PO is missing any of the above information it could delay the processing of your order. A sales support representative will contact you to request the required information.

Minimum Order Quantity

MOQ for Classic Tervis is 100 units with a setup fee of \$85(c) or an exact repeat setup fee of \$25(g). Tumbler sizes can be assorted to meet 100 unit MOQ if emblem is chosen as decoration method. A Less Than Minimum (LTM) option is available on wrap inserts only which allows an order of 50-99 units with an additional \$50 LTM fee. MOQ for Stainless Steel products is 25 units with a setup fee of \$85(c) or an exact repeat setup fee of \$25(g). MOQ for FlexStyle is 100 units with a setup fee of \$125(c).

Pricing

Prices are shown in U.S. (\$) dollars and subject to change without notice.

Payment

Individual payment for each order shall be in accordance with the corresponding invoice and shall be due net 30 days from date of invoice for customers with approved credit only (credit may be denied for any legal reason, and some restrictions may apply). All others shall pay in advance: Visa, MasterCard, American Express, and Discover cards accepted or by check. Orders will not be produced until either credit is approved or advance payment is received. A service charge equal to the lesser of 2% per month or the maximum amount permitted by law shall be assessed on each invoice remaining unpaid 30 days after its due date. Reseller shall be responsible for all costs and expenses, including attorney's fees, incurred by Tervis in connection with collection of any delinquent invoice.

Packaging

Individual tumblers are poly-bagged as single units. Tumblers are also available in a variety of gift box configurations. Please review packaging options in Tervis' current catalog.

Shipping and Distribution

F.O.B. North Venice, FL, USA. Title passes from Tervis to purchaser upon tender of freight to carrier. Orders are shipped via FedEx, unless otherwise specified. Shipping charges are added to the invoice. Drop shipment is available for \$5.00 per address in addition to standard shipping charges up to 20 addresses max. Rush services may be available for an additional 10% of the total invoice amount (\$25 minimum). Expedited shipping charges may also apply. Tervis provides shipping confirmation to all purchasers with valid e-mail addresses. Additional fees apply for custom inserts that arrive on a rush basis.

Shortage and Damages

Claims for shortages must be reported in writing to Tervis within seven (7) days from delivery of all or any part of an order.

Lead Time

Proofs – 2-4 business days

Wrap inserts – 7 business days after final proof approval

Embroidered and Enhanced emblems – 12 business days after final proof approval

Flexstyle - 12 business days after final proof approval

Stainless Steel product decoration – 7 business days after final proof approval

Licensed logos may be subject to additional time due to licensor approvals.

Classic Tumbler Guarantee

Tervis tumblers are guaranteed for life. Tervis will replace all products (except accessories), which Tervis confirms by visual inspection to have defects in material or workmanship. Items damaged due to normal wear and tear (e.g. fading, scratching), improper care, or abuse will not be replaced. Defective tumbler(s) are to be sent to Tervis directly for replacement. Tervis will only carry the outbound shipping cost. Purchaser recourse limited to replacement as follows: Tervis will replace the tumbler(s) with the same size tumbler and a stock design (non-licensed) found on tervis.com or with a clear tumbler.

Tervis Stainless Steel Limited Lifetime Guarantee

What's covered:

- Damage as a result of shipping process
- Failure to keep hot drinks hot and cold drinks cold
- Broken lids

What's not covered:

- Normal wear and tear including fading, dents, chips and scratches
- Damages that result from improper use via cleaning, disassembly or modifications fire or Acts of God
- Peeling, chipping or fading of printed designs

Respect for Third Party Intellectual Property Rights

By submitting artwork for incorporation into a custom design, purchaser warrants that the artwork and design are your original work or the work of a third party who has given you permission and license to use it. Purchasers submitting third party intellectual property (e.g. a company logo, or college mark), must include the content creator/owner's written authorization (upon request, Tervis will provide purchaser with release template). Purchaser shall indemnify and hold Tervis harmless from and against all damage, loss, cost and expense arising from a third party claim of infringement arising from use of artwork supplied by purchaser. Licensed logos may be subject to additional costs and may require additional time for licensor approval logo. Text must not contain any indecent verbiage or graphics. Tervis reserves the right to refuse any artwork for any reason.

Cancellation Policy

Purchaser must pay Tervis an \$85(c) fee, plus full cost of inserts, if inserts ordered, and proofing and sample fees, for any cancelled "Custom Insert" orders regardless of reason.

Artwork Requirements

Camera ready vector art is required; all fonts must be converted to outlines, curves, or paths. Please supply PMS/Pantone color for reference if available.

Embroidery: A Tervis classic. Color options up to 10 standard thread colors.

Max Dimensions 2.5" Overall, 3" max width and 2.75" max height.

Enhanced Embroidery: Allows for finer detail. 4 color process.

Wraps: Printed on clear material for incredible, glass-like clarity. Printed with CMYK process. PMS/Pantone colors will be matched as closely as possible.

Custom Tumbler Insert Artwork Charges

A non-refundable \$85(c) set-up fee is payable upon submission of Order. Reorders are billed at \$25(c). There is no discount for customer supplied embroidery files .dst or .emb. Virtual proofs are provided at no charge. Art changes e.g. typesetting, layout and design or recreating art, will be charged at \$50(x) per hour, with a min. one hour charge.

(SPEC) Samples, Pre-production proof or Virtual image

Pre-production samples and Spec samples are provided for a \$85(c) fee for 4 Classic Tervis products or 1 Stainless Steel product. The \$85(c) sample fee will be applied against the \$85(c) setup fee if an order is generated from the samples. If an emblem is the method of decoration product samples can be of assorted Classic Tervis products. If a wrap is the method of decoration samples must be the same size product. For a FREE Virtual sample requests please go to www.tervispromos.com

